

Xerox® VersaLink® C8000W Colour Printer Featuring White Toner

Explore new opportunities in the world of colour printing with dark media



C8000W

xerox™

Introducing Xerox® VersaLink® C8000W Colour Printer Featuring White Toner

The VersaLink® C8000W Colour Printer featuring white toner helps you offer differentiated prints to your customers to set them apart from their competition. By printing with white toner to accentuate text and by making traditional CMYK images prominent on dark media, VersaLink® C8000W Colour Printer helps you stand out from the rest. This helps you print more professional-looking documents that are sure to draw attention. With a small footprint and low price point for such a powerful addition to any designer's toolkit, the C8000W Colour Printer gives you an edge.

TECHNOLOGY THAT SETS IT APART

The VersaLink® C8000W Colour Printer is supplied with everything you need to support white toner workflows; integral graphics controller, Mac and Windows drivers, and built-in color tables.

The technology used in VersaLink® C8000W Colour Printer is White plus Cyan, Magenta, and Yellow, with White being applied to the media first. This delivers impressive results when you print on a range of dark media. For example, white text on dark media brings out the highest quality of the print output. Similarly, printing CMYK images on dark media using White as an underlay lets the colours pop out with stunning quality, opening a world of print possibilities on media never used before.

OPENING UP WINDOWS OF OPPORTUNITY

When it comes to window signage, printing colours on transparent media without a white underlay makes the output look dull and unreadable. But with VersaLink® C8000W Colour Printer, you can now print white underneath the CMYK toners. This will make the colours look stunning and allow you to print and display professional-grade images on windows and capture your customers' attention.



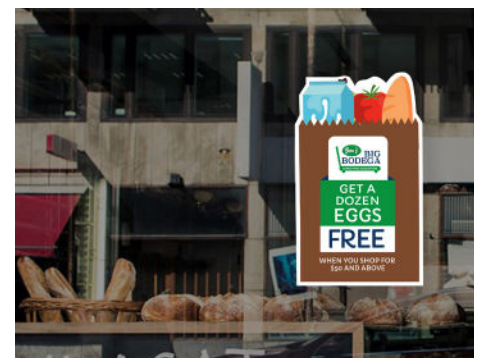
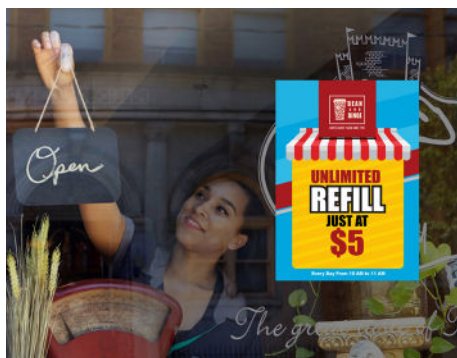
GET CREATIVE, DO MORE, AND EARN MORE

Open your print shop to new and existing customers offering new ways of differentiation for their print. Be it wedding invitations, restaurant menus, or banners—print them all, make them look spectacular, and impress your customers with the use of media not available to you before. This boosts the range of services that you can offer to your customers and opens up more revenue streams for your business.

ADD AWESOME STYLE AND SUPERIOR QUALITY TO YOUR OUTPUT

The VersaLink® C8000W Colour Printer can be used to enhance the prints for any business, from adding eye-popping window signage to incredible bright images on specialty media for delivering your messages in a more professional and impactful way.

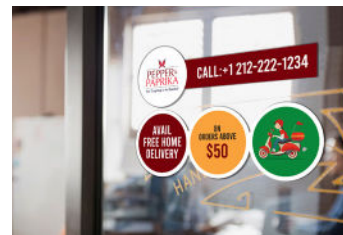
- Dark and coloured media printing
- Dark and coloured envelope printing
- Window signs, decals, and labels



Introducing Xerox® VersaLink® C8000W Colour Printer Featuring White Toner



VersaLink® C8000W plus Two Tray Module

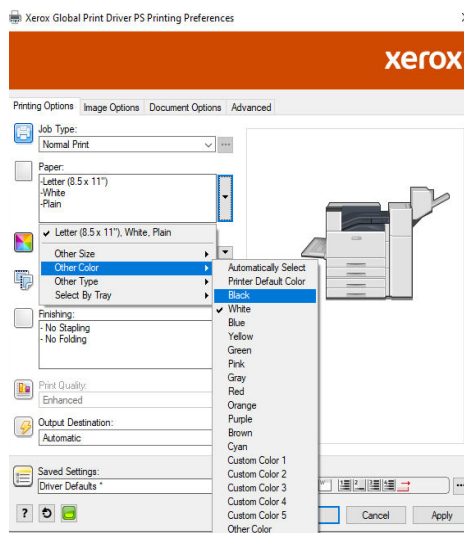


APPLICATIONS

The VersaLink® C8000W Colour Printer is designed for a variety of users – general office suite users, designers, and others who may not have the required skills in advanced graphics software.

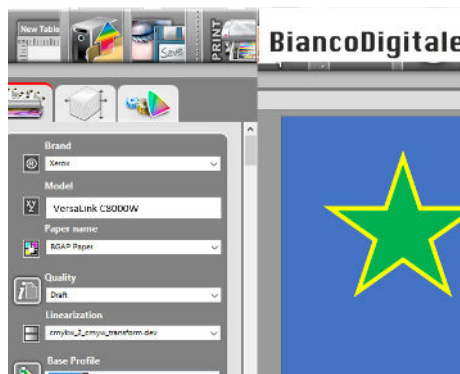
WHITE TEXT AND GRAPHICS FOR OFFICE SUITE USERS

Use the supplied Windows and Mac driver to select up to 12 media colours and print to the device from your normal Microsoft Applications. Select a white font colour, and you are done. For example, create a white text menu on dark media for professional-grade image output to set your customer's restaurant apart from the competition.



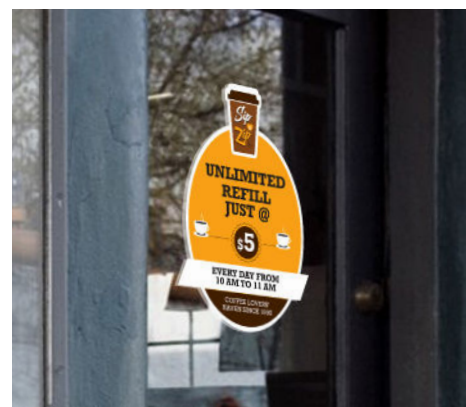
FULL GRAPHICS FEATURING WHITE TONER FOR ALL USERS

With the use of optional software like BiancoDigitale, users can easily import PDFs, Photoshop files, or bitmap graphics like a JPEG or BMP, and quickly create output for the VersaLink® C8000W Colour Printer featuring white toner. Select the media colour you want to use, and the software will automatically transpose any black toner to white and automatically apply white as an underlay to your CMYK images. The output is customized for each media colour, and thus, incredible print quality is delivered quickly and easily without the need to be a designer.



DESIGNERS

Designers using the Adobe suite will delight in being able to take full advantage of today's new and innovative dark and coloured papers, envelopes, and synthetic substrates. Other devices can only print on basic white paper and media, whereas the VersaLink® C8000W Colour Printer opens this whole new world of media. Designing an image with 'white in mind' and by incorporating some simple design techniques, the VersaLink® C8000W Colour Printer will automatically apply white as an underlay to give stunning results on your chosen media.



Xerox® VersaLink® C8000W Colour Printer

Featuring White Toner

ConnectKey®

Technology

The VersaLink® C8000W Colour Printer featuring white toner is the low-cost entry point to a world of new print applications. For more information, visit <https://www.xerox.ca/en-ca/office/printers/versalink-c8000w>.

| DEVICE SPECIFICATION | | VERSALINK® C8000W |
|---|----------|---|
| Speed ¹ | | Up to 45 ppm letter/A4 |
| Monthly Duty Cycle ² | | 205,000 |
| Hard Drive/Processor/Memory | | Optional 320 GB HDD/1.6 GHz/4 GB |
| Connectivity | | Ethernet 10/100/1000 Base-T, High-speed USB 3.0, Wi-Fi and Wi-Fi Direct with optional Wi-Fi Kit, NFC Tap-to-Pair |
| Controller Features | | Configuration Cloning, Xerox Extensible Interface Platform®, Xerox® App Gallery App, Xerox® Standard Accounting Tool, Role-Based Permissions, Convenience Authentication Enabled |
| Print Resolution | | Up to 1200 x 2400 dpi |
| First-print-out Time | | As fast as 15 seconds colour/14 seconds monochrome |
| Page Description Languages | | Adobe® PostScript® 3™ |
| Colour Management | | Xerox Colour Corrections, Xerox Colour Management to allow near-WYSIWYG output on 12 different media colours |
| Paper Input | Standard | Bypass Tray: Up to 100 sheets; Custom sizes: 3.5 x 3.9 in. to 12.6 x 19 in./88.9 x 98.4 mm to 320 x 482.6 mm; Banners: 12.6 x 52 in./320 x 1,320.8 mm (64 to 300 gsm) Tray 1: Up to 520 sheets; Custom sizes: 3.9 x 5.8 in. to 11.7 x 17 in./100 x 148 mm to 297 x 431.8 mm (64 to 300 gsm) Tray 2: Up to 520 sheets; Custom sizes: 3.9 x 5.8 in. to 12.6 x 18 in./100 x 148 mm to 320 x 457.2 mm (64 to 300 gsm) |
| | Optional | Two Tray Module: Up to 1,040 sheets; Custom sizes: 3.9 x 5.8 in. to 12.6 x 18 in./100 x 148 mm to 320 x 457.2 mm (64 to 300 gsm) Tandem Tray Module: Up to 2,000 sheets; 8.5 x 11 in., 7.25 x 10.5 in./A4, B5 (64 to 300 gsm) High Capacity Feeder: Up to 2,000 sheets; 8.5 x 11 in., 7.25 x 10.5 in./A4, B5 (64 to 216 gsm) Envelope Tray (replaces Tray 1): Up to 50 envelopes: #10 Commercial, Monarch, DL, C4, C5, C6 (75 to 90 gsm) |
| Paper Output/Finishing | Standard | Dual Offset Catch Tray (standard when finishers are not attached): 250 sheets each |
| | Optional | Office Finisher: 2,000-sheet stacker, 50 sheets stapled, 3-position stapling, optional hole punch, optional booklet maker (score, saddle stitch) BR Booklet Maker Finisher: 1,500-sheet stacker and 500-sheet top tray, 50-sheet multiposition stapling and 2/3-hole punching plus saddle-stitch booklet making (2 to 16 sheets, 64 pages) and V-folding |
| Automatic Two-sided Printing | | Standard |
| INTUITIVE USER EXPERIENCE | | |
| Customize and Personalize | | Walkup customization, Personalize Home Screen by User, Multiple Home Screens with Simple ID, Customize by Site, Function or Workflow with Xerox App Gallery and Xerox App Studio |
| Print Drivers | | Job Identification, Bi-directional Status, Job Monitoring and Xerox® Global Print Driver® |
| Xerox® Embedded Web Server | | PC or mobile—Status Information, Responsive Design, Settings, Device Management, Cloning |
| Remote Console | | Remote Control Panel |
| Print Features | | Secure Print, Sample Set, Personal Print, Saved Job, Earth Smart Driver Settings, Job Identification, Booklet Creation, Store and Recall Driver Settings, Bi-directional Real-time Status, Scaling, Job Monitoring, Application Defaults, Two-sided Printing, Skip Blank Pages, Draft Mode |
| BENCHMARK SECURITY | | |
| Network Security | | IPsec, HTTPS, Network Authentication, SNMPv3, SSL/TLS, Security Certificates, Pre-installed Self-signed Certificates |
| Device Access | | Firmware Verification, User access and internal firewall, Port/IP/Domain Filtering, Audit Log, Access Controls, User Permissions, Xerox® Integrated RFID Card Reader, Trusted Platform Module (TPM) |
| Data Protection | | Setup/Security Wizards, Job Level Encryption via HTTPS/IPPS submission, Encrypted hard disk (AES 256-bit, FIPS 140-2) and image overwrite ³ , Encrypted Apps with Embedded Certificate Support |
| Document Security | | Secure Print |
| ENABLES NEXT GENERATION SERVICES | | |
| Print Management | | Xerox® Standard Accounting; Optional: Xerox® Workplace Cloud/Suite, Nuance Equitrac, Ysoft SafeQ, PaperCut and more at https://www.xerox.ca/en-ca/office/software-solutions#printmanagement . |
| Managing Print | | Xerox® Device Manager, Xerox® Support Assistant App, Auto Meter Read, Managed Print Services tools |
| Sustainability | | Cisco EnergyWise®, Earth Smart Printing, EPEAT-verified, Print User ID on margins |
| GATEWAY TO NEW POSSIBILITIES | | |
| Xerox App Gallery | | Many apps and cloud services available. Visit www.xerox.com/appgallery for a growing selection of Xerox® Apps available for adding functions. |

¹ Declared print speed in accordance with ISO/IEC 24734. ² Maximum volume capacity expected in any one month. Not expected to be sustained on a regular basis; ³ HDD required for image overwrite.

Certifications

To view the latest list of certifications, go to www.xerox.com/OfficeCertifications.

Supplies

Standard Capacity Toner Cartridges for C8000W:

| | |
|-----------------------------------|-----------|
| White 5K pages ⁴ | 106R04646 |
| Cyan: 7,600 pages ⁵ | 106R04034 |
| Magenta: 7,600 pages ⁵ | 106R04035 |
| Yellow: 7,600 pages ⁵ | 106R04036 |

High Capacity Toner Cartridges for C8000W:

| | |
|------------------------------------|-----------|
| Cyan: 16,500 pages ⁵ | 106R04046 |
| Magenta: 16,500 pages ⁵ | 106R04047 |
| Yellow: 16,500 pages ⁵ | 106R04048 |

Routine Maintenance Items:

| | |
|---|-----------|
| Drum Cartridge: 190,000 pages each colour/ up to 240,000 pages white only | 101R00602 |
| Waste Cartridge: Up to 47,000 pages ⁷ | 108R01504 |
| IBT Cleaner: Up to 160,000 pages ⁶ | 104R00256 |
| Transfer Roller: Up to 200,000 pages ⁶ | 116R00015 |

Options

| | |
|------------------------------------|-----------|
| Two Tray Module | 097S04969 |
| Tandem Tray Module | 097S04970 |
| High Capacity Feeder | 097S04845 |
| Envelope Tray (Replaces Tray 1) | 497K17880 |
| Office Finisher | 097S05019 |
| 2/3 Hole Punch for Office Finisher | 497K20600 |
| Booklet Maker for Office Finisher | 497K20590 |

BR Finisher with Booklet Maker

| | |
|--|-----------|
| (requires horizontal transport kit) | 097S04981 |
| Horizontal Transport Kit for BR Finisher | 497K17440 |
| HDD (320 GB Hard Drive) | 097S04971 |
| Wireless Network Adapter (Wi-Fi Kit) | 497K16750 |
| Internal Card Reader/RFID Kit | 497K18120 |
| BiancoDigitale SW Kit | 497N07139 |

⁴ 5% coverage

⁵ Average standard pages. Declared Yield in accordance with ISO/IEC 19798. Yield will vary based on image, area coverage, and print mode.

⁶ Approximate pages. Declared yield will vary depending on job run length, media size/orientation, and machine speed.

For more information, visit <http://www.office.xerox.com/latest/SUPGL-01.PDF>. Configurations vary by geographical location.

⁷ Max yield running 100% white pages with 5% coverage. Expected yield 30.4K running 50% WCMY, 40%W, 10%CMY pages.

For more detailed specifications, go to <https://www.xerox.ca/en-ca/office/printers/versalink-c8000w>.

© 2021 Xerox Corporation. All rights reserved. Xerox®, ConnectKey®, Global Print Driver®, VersaLink®, and Xerox Extensible Interface Platform® are trademarks of Xerox Corporation in the United States and/or other countries. The information in this brochure is subject to change without notice. 04/21 TSK-1578 BR32076 VC8BR-02CC

xerox™